



TIMBER BUILDINGS
GARDEN ROOMS, OFFICE PODS, and TIMBER HOMES



Abwood, Timore Lane, Newcastle, Co Wicklow, A63 EC94
Tel: 01 281 0109 www.abwood.ie sales@abwood.ie

ABWOOD TIMBER BUILDINGS

Welcome to Abwood and our custom made timber buildings, manufacturing to suit individual design & requirements. Our buildings are bespoke and can be made to any dimensions - from a small garden room, office pod, gym or children's playroom to a 3-4 bedroom timber home. We work directly with the client designing the layout and finish that suits the individual space available. We also offer a site visit as standard, following which we prepare a detailed quote and drawings.

In order to provide an initial guide price we correlate the following:

- Approximate size of building required
- Plans showing window and floor layout
- Electrical points & plumbing requirements (where necessary)
- Selected specification & finishes
- Location & access

Specification & finishes of our timber buildings include the following:

Foundations

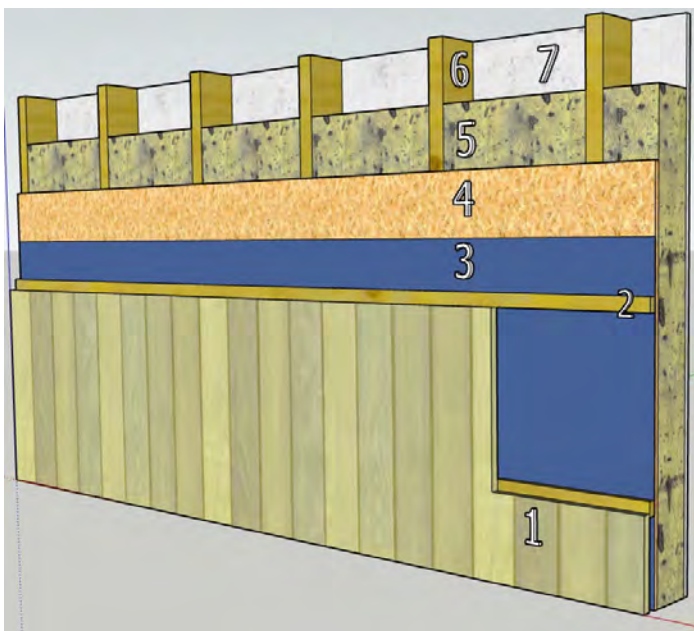
Dependent on the nature/size of the building, either a block or concrete base will be required. We can include for a block foundation as standard or quote additionally for a concrete base if required/desired. Alternatively, these can be arranged by the client.

Wall construction

External walls are constructed as follows:

Building Material

- 1 19mm Thick Pressure Treated Timber Cladding
- 2 32mm x 16mm Timber Baton
- 3 Breathable Moisture Barrier Lining
- 4 12mm OSB Board
- 5 100mm Acoustic Earthwool Insulation
- 6 100mm x 44mm Pressure Treated Frame
- 7 Skimmed plasterboard Interior



Insulation

Insulation to the floor, ceilings and side walls comes as standard using 100mm thickness Earthwool. This is a high quality thermal insulation made from recycled glass fibres bonded by renewable bio-based materials (instead of the traditional petroleum based binders). Earthwool contains none of the phenol, formaldehyde, acrylics or dyes found in other glass wool products, is non-combustible and does not absorb atmospheric moisture. It is ranked as environmentally friendly as sheep's wool.

Roofing Materials

As a standard finish we use Galvanised box profile roofing available in either dark green or grey. Further roofing options are available including a Spanish tile effect in plastic coated steel (available in a variety of colours), or a tegral tile finish.

Windows & Doors (2 options, both available in a wide variety of colours)_

Double glazed PVC

Aluminium (which can include a bi-folding mechanism)

Timber cladding (3 options)

Horizontal 145mm x 20mm pressure treated weather sheeting

Vertical cladded pressure treated tongue & grooved (95mm x 19mm), secret nailed

Vertical cladded Cedar (95mm x 19mm), secret nailed

Electrics & Plumbing

We work with registered & qualified contractors and can quote to include for electrical and plumbing works which may be required.

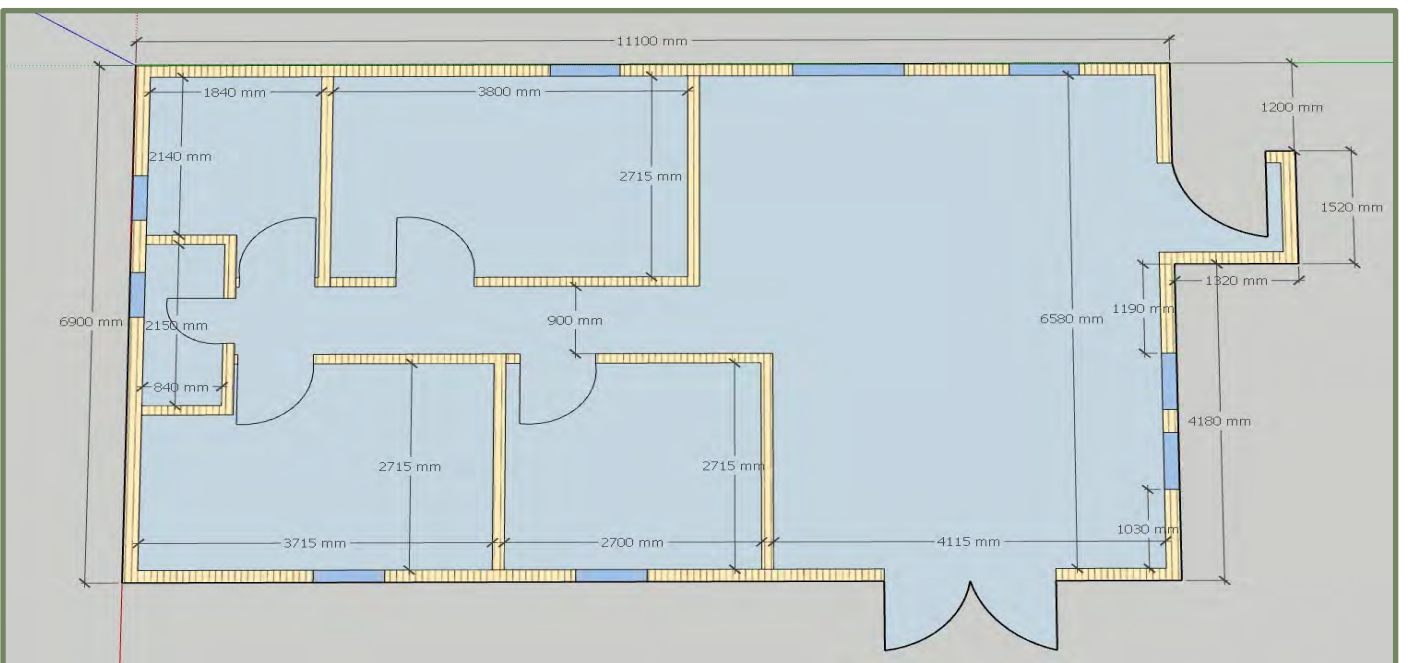
To discuss your requirements further please contact our office on 01-2810109 or email one of our sales team – sales@abwood.ie

Examples Of Previous Timber Buildings

3 Bedroom Farm Manager's Lodge

This client came to us with a specific brief which resulted in a spacious 3 bedroom home, offering an open plan living space with a partially covered raised deck. This 80m² 3 bedroom home has both a stylish and functional roof line affording a large south facing aspect for which to house solar panels. This design, combined with the longline windows, offers a sleek build both affording magnificent views out over the countryside with a bright and airy living space within.

Selected finishes included the vertical tongue and grooved cladding (secret nailed), Anthracite PVC windows and doors, galvanised box profile roof and skimmed plaster board internal wall & ceiling finish.



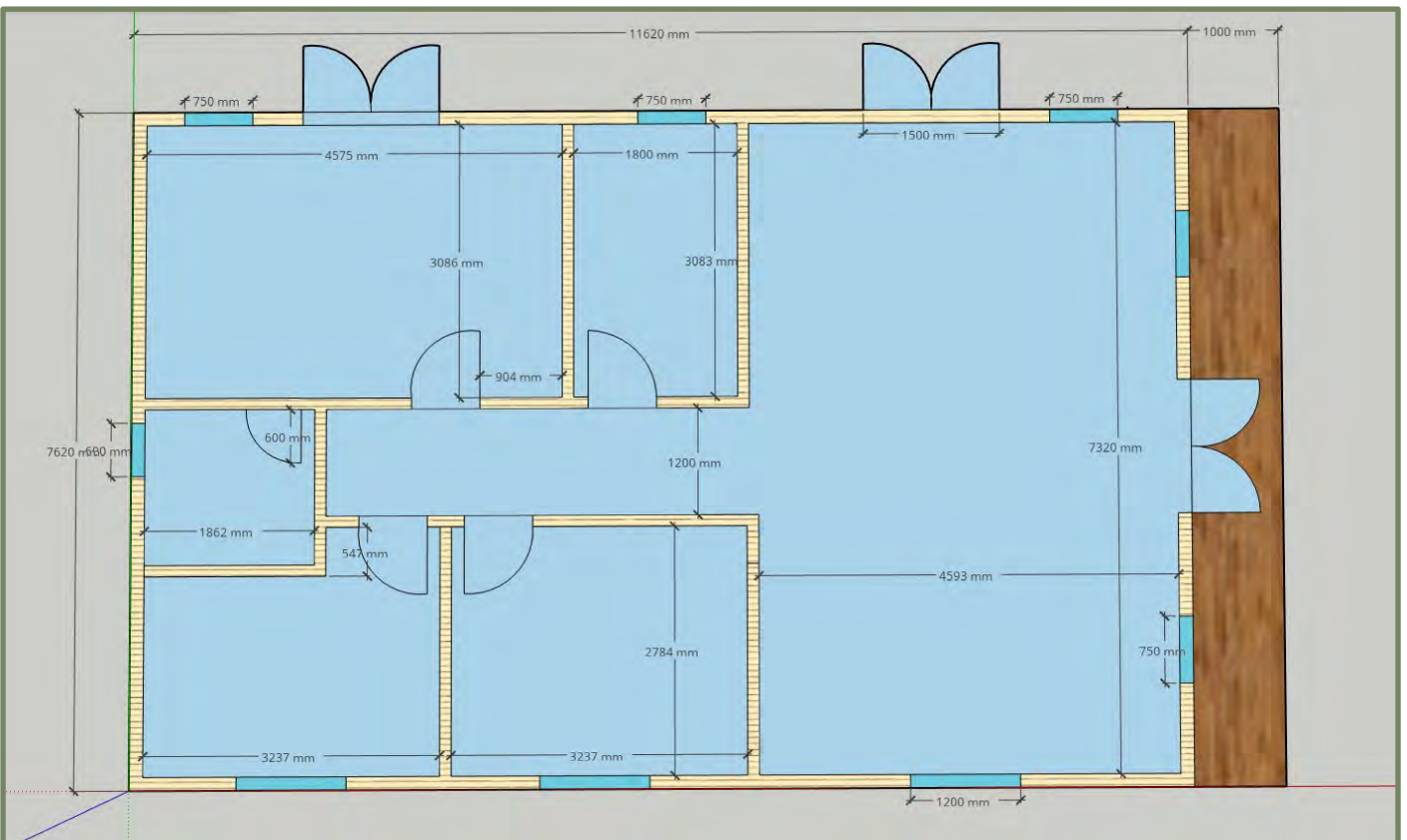


Examples of our Timber Buildings

3 bedroom En-Suite Holiday Home with Vaulted ceiling

The nature of our bespoke buildings meant that this client was able to achieve their dream holiday home, a 3 bedroom open plan home with covered veranda affording them the spectacular sea views they desired. We were able to incorporate both a family bathroom as well as an ensuite to the master bedroom.

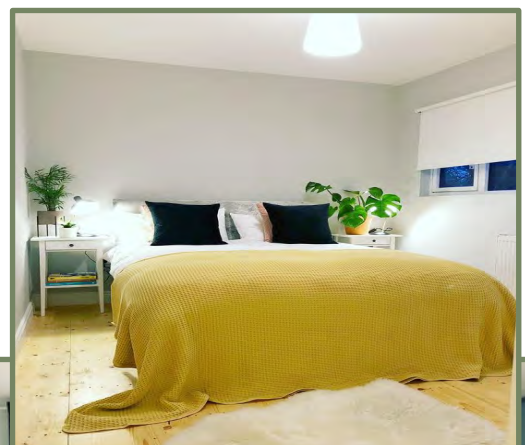
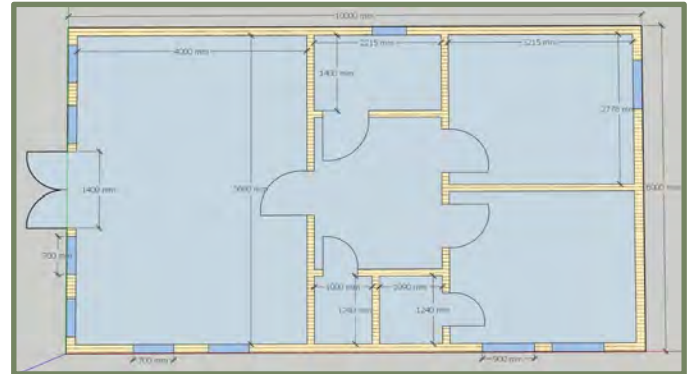
Selected finishes included the vertical cladded pressure treated tongue and groove cladding (secret nailed), double glazed Modus PVC windows and doors (anthracite in colour) with a Spanish Tile effect steel roof (also anthracite in colour). The interior of the building boasted a vaulted 'cathedral' style ceiling with both walls and ceiling finished with timber cladding. One of the other additions to the specification of this home was additional thickness of wall insulation, increased from 100mm to 160mm.





2 Bedroom Home with En-Suite W/C and large open deck

This 60m² cosy 2 Bedroom home benefits from both an en-suite w/c & a family bathroom and also offers an extensive deck to the front. Selected finishes include the pressure treated horizontal weather sheeted cladding, double glazed Modus PVC Windows and doors and a matching Spanish tile effect roof. The client also opted for additional wall insulation to a thickness of 160mm with a skim coated plaster interior and a high quality electrical specification in the design. The end result is this beautiful home.



Examples of Office pods & Garden Rooms

20m² Garden Office / Storage designed as a fully insulated home office with separate access for garden storage (storage area not insulated). Selected finishes included horizontal pressure treated weather sheeted cladding, Double Glazed Modus Grey PVC windows and doors with a Dark grey Box Profile roof. The door for the storage space was fitted with opaque glass for privacy.



12m² Garden Office - a contemporary focal point to the customers garden. Selected finishes included vertical cladded pressure treated TG&V timber, Modus Grey PVC windows and doors with an anthracite composite deck ramp for wheel chair accessibility. The building features a 300mm overhang with up/down lighters.



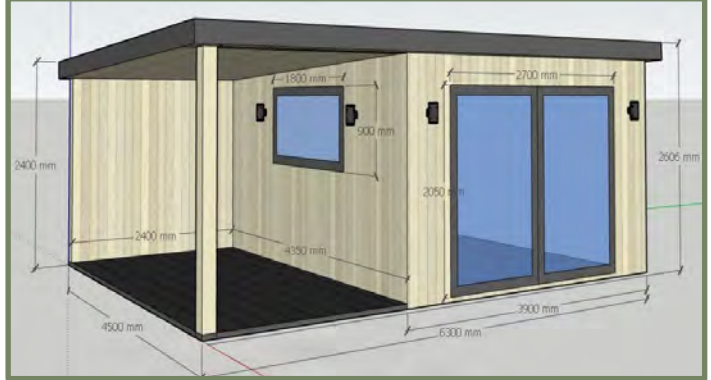
9m² Home Office Pod - an ideal solution for an office 'out of the home'. Selected finishes included vertical pressure treated TG&V timber cladding with double glazed Modus Grey windows and doors.



Other examples of Home Offices & Garden Rooms

18m² Home Gym with covered veranda of 11m²

This is a fully insulated garden room to be used as a home gym. Selected finishes included vertical pressure treated TG&V timber cladding, bi-fold aluminium doors in anthracite and a dark grey box profile roof. The covered veranda and front elevation also benefit from up/down lighters.



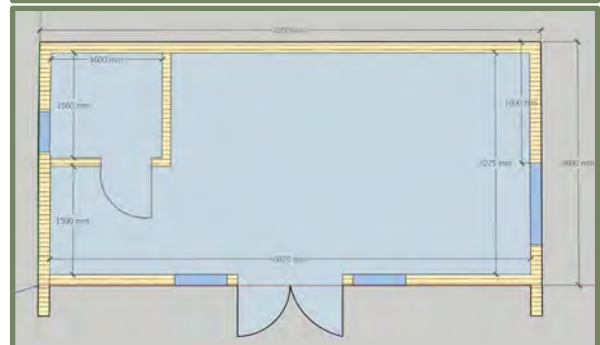
5m x 3m Garden Sewing Room

This is a fully insulated garden room to be used as a sewing room. Selected finishes included vertical pressure treated TG&V timber cladding, Double glazed PVC Windows & Doors in anthracite and a dark grey box profile roof. 300mm overhang on side walls with stylish up and down lights.



25m² "Studio"

Fully insulated timber building with a vertical cladded TG&V Timber and double glazed PVC Windows & Doors. This building included 1 internal partition for shower, toilet and wash basin.



Other examples of Home Offices & Garden Rooms

4.8m x 4m Games Room

This 4.8m x 4m fully insulated garden room was the perfect space for a teenager “hang out spot”. This building was fully insulated and included 2m wide French opening PVC Doors and window. The building was clad in a vertical TG&V timber finished with more modern style front overhang with chrome up and down external lighting.



10m x 3.6m “Home Spa”

This 36m² was the perfect space to house a home gym and hot tub. This fully insulated timber garden room featured vertical cladded tongue and groove cladding, Modus Grey PVC Windows & Doors and included a felt tiled roof.



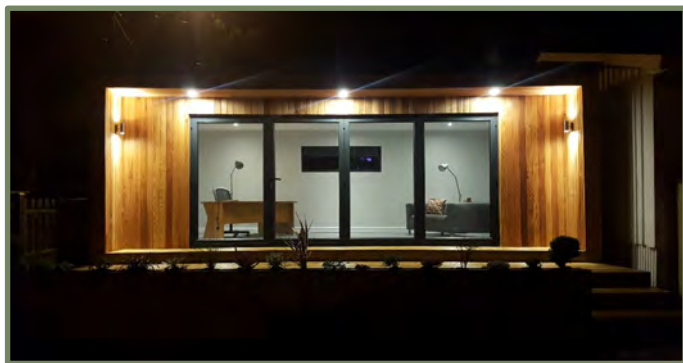
5m x 4m Cedar Office

The perfect place to work from home. This stylish insulated home office was clad with cedar wood on the visible sides and pressure treated pine to at the rear. This garden room featured an internal uninsulated room for shed storage with hidden access at the rear and a sheltered Log Storage “area” at the side. The exterior spot lights really shows off the cedar timber and created the perfect show case for this customers garden.



28m² Cedar clad Garden Room

This 6.7m x 4.2m fully insulated garden room boasts some of the superior finishes available with our timber buildings. State of the art bi-folding aluminium doors open the full length of one side of the building and are set into a 450mm covered recess within the roofline, boasting spot lights & up/down feature lighting with vertical cedar cladding.



The below garden gym / jacuzzi room was perfect for the view from this customers garden. This 9m x 4.2m garden room was clad with horizontal pressure treated weather sheeting and included double glazed Anthracite grey aluminium windows and doors.



Abwood Gazebo's and Car Port's



Abwood, Timore Lane, Newcastle, Co Wicklow, A63 EC94
Tel: 01 281 0109 www.abwood.ie sales@abwood.ie